



# Cambridge IGCSE™

CANDIDATE NAME



CENTRE NUMBER

--	--	--	--	--

CANDIDATE NUMBER

--	--	--	--

**MUSIC**

**0410/11**

Paper 1 Listening

**October/November 2024**

**Approximately 1 hour 15 minutes**

You must answer on the question paper.

You will need: Insert (enclosed)

## INSTRUCTIONS

- Answer **all** questions in Sections **A**, **B** and **C**.
- Section **D**: answer **all** questions on the **one Set Work** you have studied, in the space provided.
- There will be time for you to look at the questions before you hear each extract of music. You may find it helpful to make notes on the music as you listen.
- Use a black or dark blue pen.
- Write your name, centre number and candidate number in the boxes at the top of the page.
- Write your answer to each question in the space provided.
- Do **not** use an erasable pen or correction fluid.
- Do **not** write on any bar codes.
- You may use an HB pencil for any music.
- The insert contains the scores for Music C1 and your chosen Set Work in Section D.

## INFORMATION

- The total mark for this paper is 70.
- The number of marks for each question or part question is shown in brackets [ ].

This document has **16** pages. Any blank pages are indicated.





**SECTION A** [16 marks]

You will hear two examples of music, selected from the Baroque, Classical or Romantic periods or the Twentieth Century.

Each extract will be played **four** times, with a pause between each playing.

**Music A1**

You will hear an extract for voice and piano. The words are in French. Read through questions **1** to **4**.

The structure of the extract is:

- Instrumental introduction*
- Verse 1*
- Instrumental interlude*
- Verse 2*

**1** Name a compositional device heard in the voice part at the start of verse 1.

..... [1]

**2** What type of voice is heard?

..... [1]

**3** Describe the ways in which the music of verse 2 contrasts with verse 1.

.....  
.....  
.....  
..... [3]

**4** Identify **three** features of the extract that suggest that it is a waltz.

.....  
.....  
.....  
..... [3]

DO NOT WRITE IN THIS MARGIN

DO NOT WRITE IN THIS MARGIN

DO NOT WRITE IN THIS MARGIN

DO NOT WRITE IN THIS MARGIN

DO NOT WRITE IN THIS MARGIN





**Music A2**

You will hear an extract for instruments. Read through questions **5** to **7**.

**5** Which of the following best describes the shape of the opening melody (after the introduction)?

- A descending leap and then movement mostly by leap
- A descending leap and then movement mostly by step
- An ascending leap and then movement mostly by leap
- An ascending leap and then movement mostly by step

[1]

**6 (a)** Which of the following best describes this extract?

- March
- Minuet
- Sonata
- Theme and variations

[1]

**(b)** Give **three** reasons for your answer.

.....

.....

.....

..... [3]

**7 (a)** What style is this music?

- Impressionism
- Jazz
- Minimalism
- Neoclassicism

[1]

**(b)** Give **two** reasons for your answer.

.....

.....

..... [2]



DO NOT WRITE IN THIS MARGIN



**SECTION B** [22 marks]

You will hear three extracts of music from around the world. Each extract will be played **four** times, with a pause between each playing.

**Music B1**

You will hear an extract for instruments. Read through questions **8** to **10**.

**8** Name the instrument in the first half of the extract.

..... [1]

**9** How does the music change in the second half of the extract?

.....  
.....  
..... [2]

**10 (a)** Where does this music come from?

..... [1]

**(b)** Give reasons for your answer.

.....  
.....  
..... [2]

DO NOT WRITE IN THIS MARGIN

DO NOT WRITE IN THIS MARGIN

DO NOT WRITE IN THIS MARGIN

DO NOT WRITE IN THIS MARGIN

DO NOT WRITE IN THIS MARGIN





**Music B2**

You will hear an extract for instruments. Read through questions **11** to **13**.

**11** Name the first instrument heard.

.....

[1]

**12** Describe the music in the second part of the extract.

.....  
.....  
.....  
.....  
.....

[4]

**13** Where does this music come from?

.....

[1]

DO NOT WRITE IN THIS MARGIN





**Music B3 (World Focus: Latin American Music)**

You will hear two passages from a piece of samba music, separated by a short gap. Read through questions 14 to 15.

14 (a) **First** passage: what is the name for the group of percussion instruments which plays at the beginning of the extract?

..... [1]

(b) What string instrument accompanies the voices?

..... [1]

(c) What other features of the first passage are typical of samba music?

.....  
.....  
.....  
..... [3]

15 (a) **Second** passage: what is the name of this section?

..... [1]

(b) Name and describe the solo instrument in this section.

.....  
.....  
..... [2]

(c) Explain what happens in this section.

.....  
.....  
..... [2]

DO NOT WRITE IN THIS MARGIN

DO NOT WRITE IN THIS MARGIN

DO NOT WRITE IN THIS MARGIN

DO NOT WRITE IN THIS MARGIN

DO NOT WRITE IN THIS MARGIN



\* 00080000007 \*



7



BLANK PAGE

DO NOT WRITE IN THIS MARGIN



[Turn over]



**SECTION C** [16 marks]

You will hear one extract of music. The extract will be played **four** times, with a pause between each playing.

**Music C1**

You will hear an extract for instruments. Look at the skeleton score, which you will find in the separate insert, and read through questions **16** to **23**. Answer the questions in this booklet.

**16** What type of ensemble is heard in this extract?

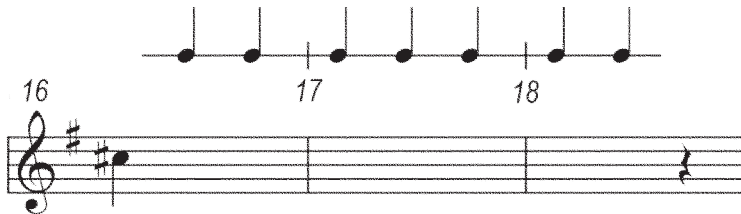
..... [1]

**17** Add articulation markings to the music printed below, to show how the opening phrase is performed.



[2]

**18** The melody is incomplete in bars 16–18. Fill in the missing notes on the staff below. The rhythm has been given to help you.



[3]

**19** Name the bracketed interval in bar 23.

..... [2]

**20** Describe in detail the texture of the music in bars 55–60.

.....  
.....  
..... [2]







21 (a) Name the key and cadence in bars 73–74.

Key: .....

Cadence: .....

[2]

(b) What is the relationship of this key to the tonic key of the Minuet?

.....

[1]

22 How is this extract typical of a Minuet and Trio?

.....

..... [1]

23 (a) When was this music written?

Baroque

Classical

Romantic

Twentieth Century

[1]

(b) Who composed it?

Bach

Chopin

Debussy

Haydn

[1]



DO NOT WRITE IN THIS MARGIN



SECTION D [16 marks]

Set Work

Answer all the questions on **one** set work:

**either** Beethoven: *Symphony No. 5* (questions **24** to **31**)

**or** Wagner: *The Mastersingers of Nuremberg*, Overture (questions **32** to **38**).

**Beethoven: *Symphony No. 5***

You will hear two extracts. Each extract will be played **twice**, with a pause between each playing.

**Music D1**

Look at the skeleton score, which you will find in the separate insert, and read through questions **24** to **26**.

**24 (a)** What section of the movement begins at the start of the extract?

..... [1]

**(b)** Compare how Beethoven presents the motif in bars 1–4 with when it was first heard at the beginning of the movement (before the recorded extract). Do **not** refer to instruments in your answer.

.....  
.....  
..... [2]

**25** How does Beethoven build towards a climax from bar 34?

.....  
.....  
.....  
..... [3]

**26 (a)** From where in the exposition is the music in bars 55–58 first heard?

..... [1]

**(b)** What instrument originally played it?

..... [1]





**Music D2**

Look at the skeleton score, which you will find in the separate insert, and read through questions 27 to 31.

27 What is the tempo marking of this movement?

..... [1]

28 Describe the music of bars 0<sup>3</sup>–4<sup>1</sup> and explain the function of these bars.

.....  
.....  
..... [2]

29 On the staff below, write the last two clarinet notes in bar 5 at sounding pitch. The key signature has been given.



[2]

30 Comment on Beethoven's use of the sections of instruments from bar 9 to the end of the extract.

.....  
.....  
..... [2]

31 Precisely name the form of this movement.

..... [1]



DO NOT WRITE IN THIS MARGIN



**Wagner: *The Mastersingers of Nuremberg*, Overture**

You will hear two extracts. Each extract will be played **twice**, with a pause between each playing.

**Music D3**

Look at the skeleton score, which you will find in the separate insert, and read through questions **32** to **35**.

**32** What do the bass instruments play in bars 8–13?

- Ascending scale
- Descending scale
- Dominant pedal
- Tonic pedal [1]

**33** Compare the music of bars 14–17 with the beginning of the extract, commenting on differences in how the theme is presented.

.....

.....

..... [2]

**34** How does Wagner’s music in bars 1–26 emphasise the importance of the Mastersingers?

.....

.....

..... [3]

**35 (a)** What does the leitmotif which is heard in bars 27–28 represent? [1]

.....

**(b)** What instrument repeats this leitmotif immediately after the recorded extract? [1]

.....

DO NOT WRITE IN THIS MARGIN





**Music D4**

Look at the skeleton score, which you will find in the separate insert, and read through questions **36** to **38**.

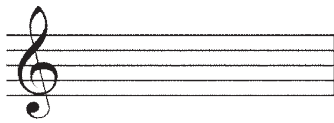
**36** Briefly explain the texture of the music during bars 1–8.

.....

.....

..... [2]

**37** On the staff below, write the last two notes of the clarinet part in bar 12 at sounding pitch.



[2]

**38 (a)** What does the theme which is played by the bass instruments in bars 16–20 represent?

..... [1]

**(b)** This theme is played twice more as the extract continues. Comment on any changes to the theme and its accompaniment during these repetitions.

.....

.....

.....

..... [3]



DO NOT WRITE IN THIS MARGIN





BLANK PAGE

DO NOT WRITE IN THIS MARGIN





**BLANK PAGE**

DO NOT WRITE IN THIS MARGIN

DO NOT WRITE IN THIS MARGIN

DO NOT WRITE IN THIS MARGIN

DO NOT WRITE IN THIS MARGIN

DO NOT WRITE IN THIS MARGIN

---

Permission to reproduce items where third-party owned material protected by copyright is included has been sought and cleared where possible. Every reasonable effort has been made by the publisher (UCLES) to trace copyright holders, but if any items requiring clearance have unwittingly been included, the publisher will be pleased to make amends at the earliest possible opportunity.

To avoid the issue of disclosure of answer-related information to candidates, all copyright acknowledgements are reproduced online in the Cambridge Assessment International Education Copyright Acknowledgements Booklet. This is produced for each series of examinations and is freely available to download at [www.cambridgeinternational.org](http://www.cambridgeinternational.org) after the live examination series.

Cambridge Assessment International Education is part of Cambridge Assessment. Cambridge Assessment is the brand name of the University of Cambridge Local Examinations Syndicate (UCLES), which is a department of the University of Cambridge.

