

CANDIDATE
NAME

--

CENTRE
NUMBER

--	--	--	--	--

CANDIDATE
NUMBER

--	--	--	--

MATHEMATICS

9709/42

Paper 4 Mechanics 1 (M1)

October/November 2019

1 hour 15 minutes

Candidates answer on the Question Paper.

Additional Materials: List of Formulae (MF9)

READ THESE INSTRUCTIONS FIRST

Write your centre number, candidate number and name in the spaces at the top of this page.

Write in dark blue or black pen.

You may use an HB pencil for any diagrams or graphs.

Do not use staples, paper clips, glue or correction fluid.

DO NOT WRITE IN ANY BARCODES.

Answer **all** the questions in the space provided. If additional space is required, you should use the lined page at the end of this booklet. The question number(s) must be clearly shown.

Give non-exact numerical answers correct to 3 significant figures, or 1 decimal place in the case of angles in degrees, unless a different level of accuracy is specified in the question.

Where a numerical value for the acceleration due to gravity is needed, use 10 m s^{-2} .

The use of an electronic calculator is expected, where appropriate.

You are reminded of the need for clear presentation in your answers.

At the end of the examination, fasten all your work securely together.

The number of marks is given in brackets [] at the end of each question or part question.

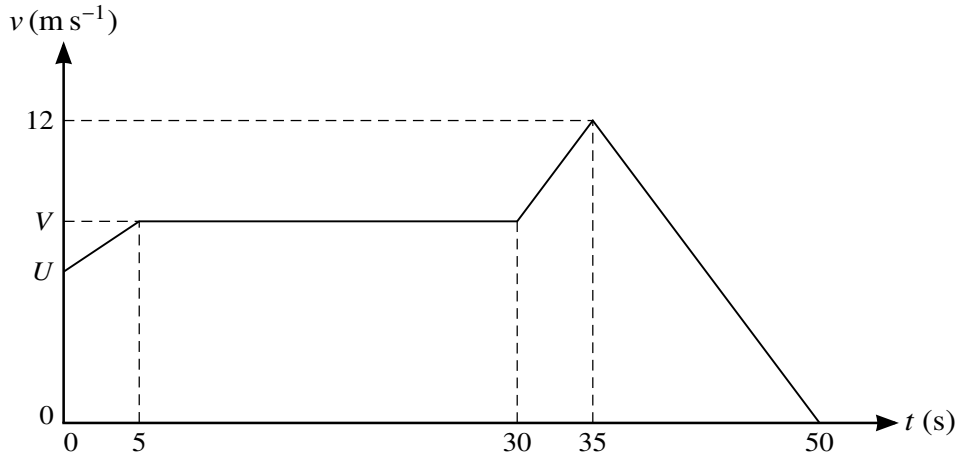
The total number of marks for this paper is 50.

This document consists of 13 printed pages and 3 blank pages.



BLANK PAGE

2



The diagram shows a velocity-time graph which models the motion of a tractor. The graph consists of four straight line segments. The tractor passes a point O at time $t = 0$ with speed $U \text{ m s}^{-1}$. The tractor accelerates to a speed of $V \text{ m s}^{-1}$ over a period of 5 s, and then travels at this speed for a further 25 s. The tractor then accelerates to a speed of 12 m s^{-1} over a period of 5 s. The tractor then decelerates to rest over a period of 15 s.

- (i) Given that the acceleration of the tractor between $t = 30$ and $t = 35$ is 0.8 m s^{-2} , find the value of V . [2]

.....

.....

.....

.....

.....

- (ii) Given also that the total distance covered by the tractor in the 50 seconds of motion is 375 m, find the value of U . [3]

.....

.....

.....

.....

.....

.....

4 A lorry of mass 25 000 kg travels along a straight horizontal road. There is a constant force of 3000 N resisting the motion.

(i) Find the power required to maintain a constant speed of 30 m s^{-1} . [2]

.....

.....

.....

.....

.....

.....

.....

.....

.....

.....

.....

.....

.....

.....

.....

.....

The lorry comes to a straight hill inclined at 2° to the horizontal. The driver switches off the engine of the lorry at the point *A* which is at the foot of the hill. Point *B* is further up the hill. The speeds of the lorry at *A* and *B* are 30 m s^{-1} and 25 m s^{-1} respectively. The resistance force is still 3000 N.

(ii) Use an energy method to find the height of *B* above the level of *A*. [5]

.....

.....

.....

.....

.....

.....

.....

.....

.....

.....

.....

.....

.....

.....

.....

.....

6 A block of mass 3 kg is initially at rest on a rough horizontal plane. A force of magnitude 6 N is applied to the block at an angle of θ above the horizontal, where $\cos \theta = \frac{24}{25}$. The force is applied for a period of 5 s, during which time the block moves a distance of 4.5 m.

(i) Find the magnitude of the frictional force on the block. [4]

.....

.....

.....

.....

.....

.....

.....

.....

.....

.....

.....

.....

.....

.....

.....

.....

.....

.....

.....

.....

.....

.....

(ii) Show that the coefficient of friction between the block and the plane is 0.165, correct to 3 significant figures. [3]

.....

.....

.....

.....

.....

.....

.....

.....

.....

.....

.....

BLANK PAGE

Permission to reproduce items where third-party owned material protected by copyright is included has been sought and cleared where possible. Every reasonable effort has been made by the publisher (UCLES) to trace copyright holders, but if any items requiring clearance have unwittingly been included, the publisher will be pleased to make amends at the earliest possible opportunity.

To avoid the issue of disclosure of answer-related information to candidates, all copyright acknowledgements are reproduced online in the Cambridge Assessment International Education Copyright Acknowledgements Booklet. This is produced for each series of examinations and is freely available to download at www.cambridgeinternational.org after the live examination series.

Cambridge Assessment International Education is part of the Cambridge Assessment Group. Cambridge Assessment is the brand name of the University of Cambridge Local Examinations Syndicate (UCLES), which itself is a department of the University of Cambridge.