



UNIVERSITY OF CAMBRIDGE INTERNATIONAL EXAMINATIONS
 General Certificate of Education
 Advanced Subsidiary Level and Advanced Level

CANDIDATE
NAME

CENTRE
NUMBER

--	--	--	--	--

CANDIDATE
NUMBER

--	--	--	--



BIOLOGY

9700/23

Paper 2 Structured Questions AS

May/June 2010

1 hour 15 minutes

Candidates answer on the Question Paper.

No Additional Materials are required.

READ THESE INSTRUCTIONS FIRST

Write your Centre number, candidate number and name in the spaces provided at the top of this page.

Write in dark blue or black pen.

You may use a soft pencil for any diagrams, graphs, or rough working.

Do not use staples, paper clips, highlighters, glue or correction fluid.

DO NOT WRITE IN ANY BARCODES.

Answer **all** questions.

At the end of the examination, fasten all your work securely together.

The number of marks is given in brackets [] at the end of each question or part question.

For Examiner's Use

1	
2	
3	
4	
5	
6	
Total	

This document consists of **15** printed pages and **1** blank page.



Answer **all** the questions.

1 Fig. 1.1 shows part of an animal cell viewed with an electron microscope.

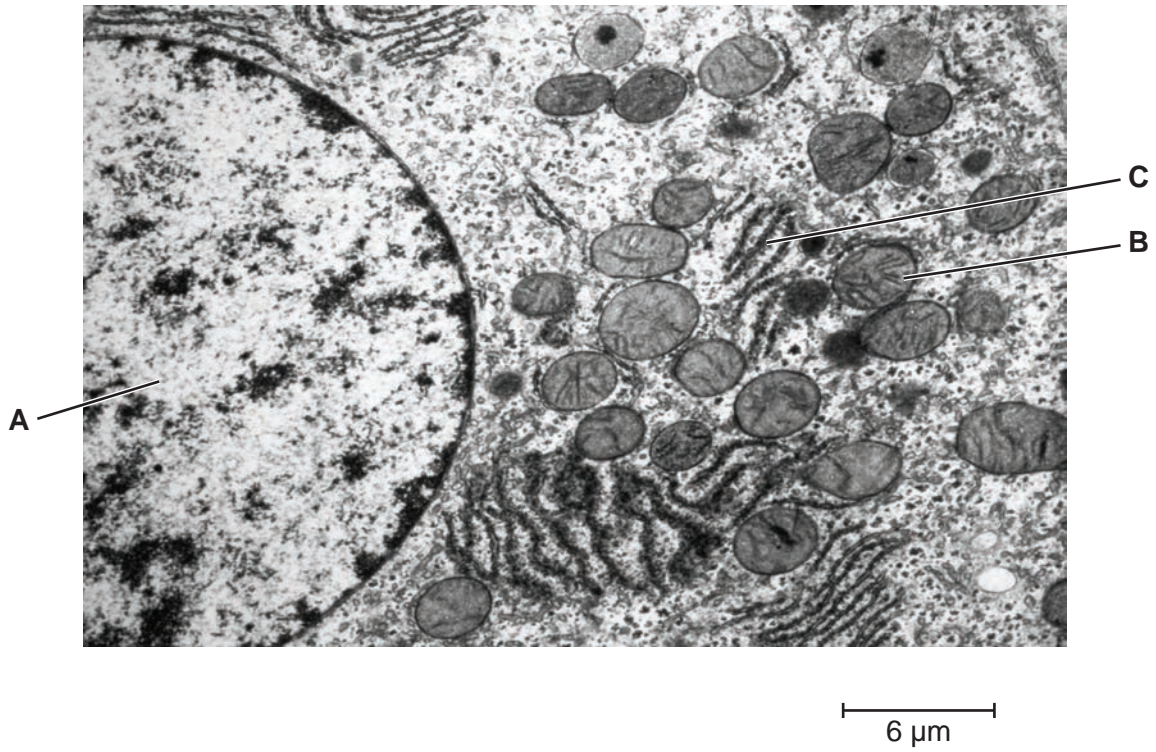


Fig. 1.1

(a) Name the structures **A** to **C**.

- A
- B
- C [3]

(b) (i) State the function of structure **C**.

..... [1]

(ii) Explain why structure **C** cannot be seen using a light microscope.

.....
.....
.....
..... [2]

- (c) Suggest **one** disadvantage of the electron microscope compared to the light microscope for the study of cells.

*For
Examiner's
Use*

.....
..... [1]

- (d) Calculate the magnification of the image in Fig. 1.1.

Show your working and give your answer to the nearest whole number.

Answer = [2]

[Total: 9]

2 Fig. 2.1 shows a diagram of a section through a human heart.

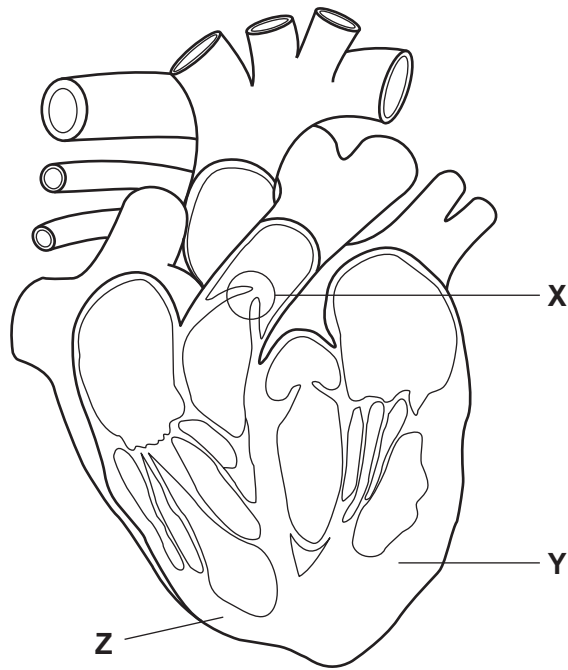


Fig. 2.1

(a) State the name and function of the circled structure labelled X.

name

function

.....

..... [3]

(b) Explain why the region labelled Y is thicker than the region labelled Z.

.....

.....

.....

.....

.....

..... [3]

4 The control of malaria is one of the top priorities of the World Health Organization (WHO). At present, there is no effective vaccine for the disease, so other preventative measures must be taken to control the spread of malaria.

(a) Describe **one** method of controlling the spread of malaria by targeting its vector and explain its effect.

.....
.....
..... [2]

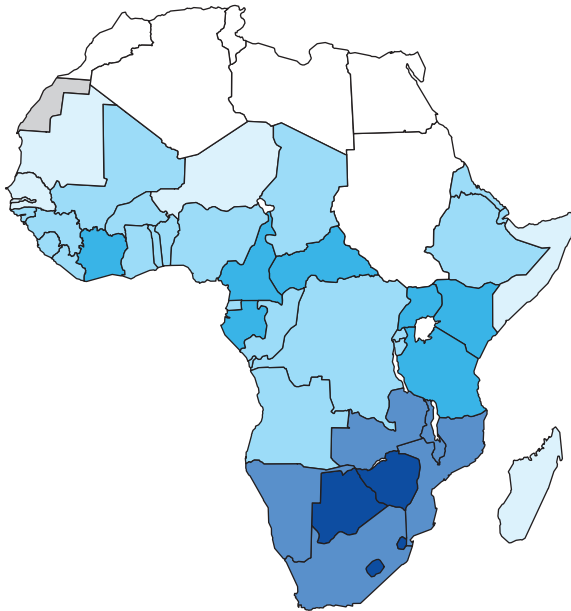
(b) Explain why it has been difficult to develop an **effective** vaccine for malaria.

.....
.....
.....
.....
.....
.....
.....
..... [3]

- (d) When a person becomes infected with the Human Immunodeficiency Virus (HIV) they become more susceptible to infection by the malarial parasite.

Fig. 4.2 shows maps of Africa produced by the WHO.

- Fig. 4.2a shows the percentage population of each country testing positive for HIV
- Fig. 4.2b shows the percentage **increase** in malaria as a result of HIV infection in each country.



HIV prevalence (%)

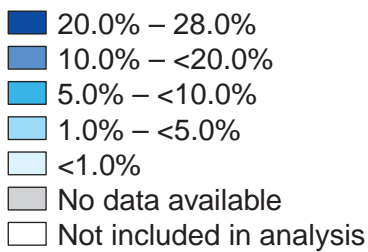
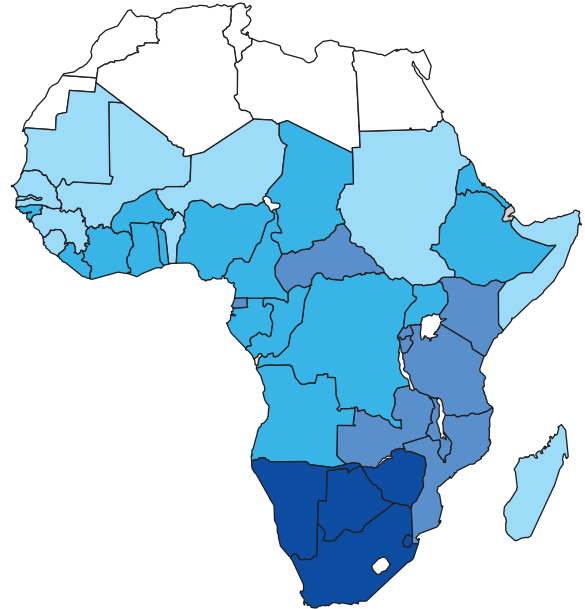


Fig. 4.2a



Malaria prevalence (%)

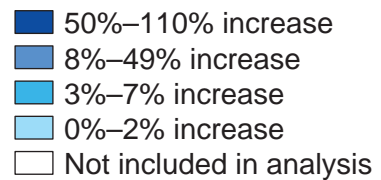


Fig. 4.2b

- (i) Explain how the information in Fig. 4.2 supports the idea that there is a link between HIV infection and susceptibility to malaria.

*For
Examiner's
Use*

.....
.....
.....
.....[2]

- (ii) Suggest how HIV infection may have led to an increase in malarial infections in these countries.

.....
.....
.....
.....[2]

[Total: 12]

- 5 (a) Some bacteria, such as *Rhizobium*, carry out nitrogen fixation, which is an important process in the nitrogen cycle.

Explain what is meant by the term *nitrogen fixation*.

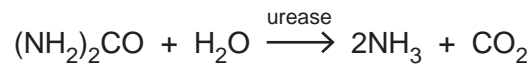
.....

.....

.....

..... [3]

- (b) An important enzyme in the nitrogen cycle is urease, which catalyses the hydrolysis of urea to ammonia. This reaction is shown below:



- (i) State the name of this process in the nitrogen cycle.

..... [1]

- (ii) Explain the importance of this process in making nitrogen from animals available for uptake by plants.

.....

.....

.....

..... [2]

- (c) The enzyme urease is known to be affected by competitive inhibitors. A student carried out an investigation to determine the percentage of urea hydrolysed by urease at various time intervals

- without any inhibitor
- with a competitive inhibitor.

The experiment was carried out in test tubes set up as follows:

Tube **A** – 1 cm³ of urease solution, 10 cm³ pH 7.5 buffer solution, 1 cm³ urea solution.

Tube **B** – 1 cm³ urease solution, 9 cm³ pH 7.5 buffer solution, 1 cm³ inhibitor, 1 cm³ urea solution.

Tube **C** – 1 cm³ water, 10 cm³ pH 7.5 buffer solution, 1 cm³ urea solution.

The results are shown in the table below.

time/min	percentage of urea remaining		
	Tube A	Tube B	Tube C
0	100	100	100
5	55	99	100
10	29	98	100
15	14	96	100
20	8	95	100
25	5	92	100
30	3	90	100

- (i) State how Tube **C** acts as a control for this investigation.

.....
 [1]

- (ii) Explain the difference in results between Tube **A** and Tube **B**.

.....

 [4]

[Total: 11]

6 Various structures in the human gas exchange system are adapted in different ways to perform their specific functions.

For
Examiner's
Use

(a) Complete the table below using a tick ✓ or cross ✗ in each box to show whether or not the structure shows the particular feature.

Two boxes have been completed for you.

	lined with cilia	reinforced with cartilage	site of gas exchange	contains smooth muscle
trachea			✗	
bronchus				
bronchiole				✓
alveolus				

[4]

(b) State the two ways in which the concentration gradients of oxygen and carbon dioxide are maintained for efficient gas exchange.

1.
.....
2.
.....

[2]

(c) The alveoli in the lungs have elastic fibres in their walls.

(i) State **one** function of the elastic fibres.

.....
..... [1]

(ii) Name the medical condition caused by breakdown of the elastic fibres.

..... [1]

(d) Cigarette smoke contains tar, a substance which has several harmful effects on **the cells** lining the gas exchange system.

*For
Examiner's
Use*

Outline three of these effects.

1.

.....

2.

.....

3.

.....

[3]

[Total: 11]

BLANK PAGE

Permission to reproduce items where third-party owned material protected by copyright is included has been sought and cleared where possible. Every reasonable effort has been made by the publisher (UCLES) to trace copyright holders, but if any items requiring clearance have unwittingly been included, the publisher will be pleased to make amends at the earliest possible opportunity.

University of Cambridge International Examinations is part of the Cambridge Assessment Group. Cambridge Assessment is the brand name of University of Cambridge Local Examinations Syndicate (UCLES), which is itself a department of the University of Cambridge.