

CANDIDATE
NAME

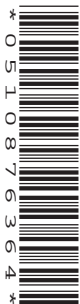
--

CENTRE
NUMBER

--	--	--	--	--

CANDIDATE
NUMBER

--	--	--	--



BIOLOGY

0610/32

Paper 3 Extended

October/November 2014

1 hour 15 minutes

Candidates answer on the Question Paper.

No Additional Materials are required.

READ THESE INSTRUCTIONS FIRST

Write your Centre number, candidate number and name on all the work you hand in.

Write in dark blue or black pen.

You may use an HB pencil for any diagrams or graphs.

Do not use staples, paper clips, glue or correction fluid.

DO NOT WRITE IN ANY BARCODES.

Answer **all** questions.

Electronic calculators may be used.

You may lose marks if you do not show your working or if you do not use appropriate units.

At the end of the examination, fasten all your work securely together.

The number of marks is given in brackets [] at the end of each question or part question.

1 Fig. 1.1 is a photomicrograph of a leaf of the tea plant, *Camellia sinensis*.

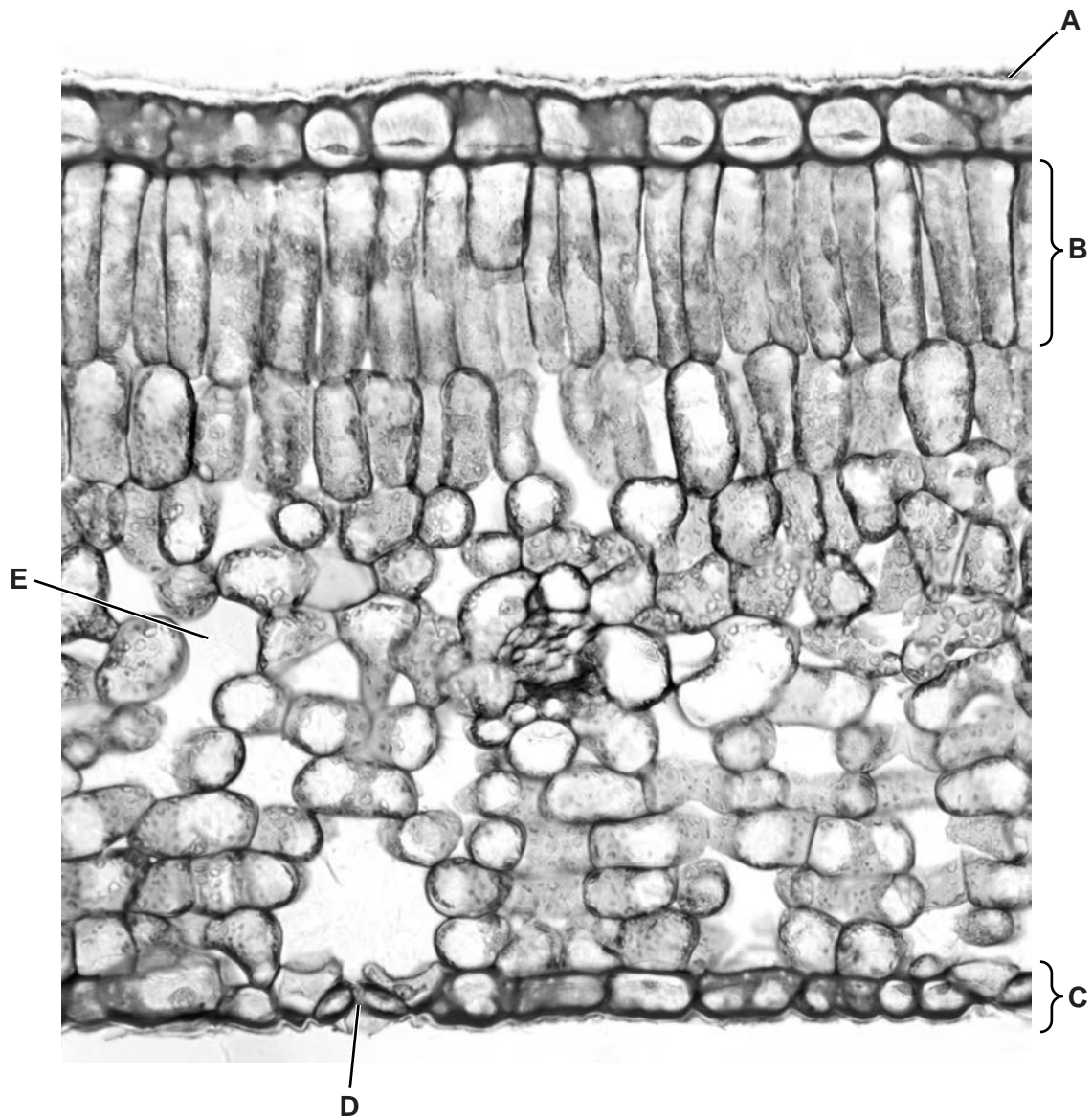


Fig. 1.1

(a) Name A to E.

- A
- B
- C
- D
- E [5]

(b) Fig. 1.2 shows a cell from region **B** of the leaf shown in Fig. 1.1.

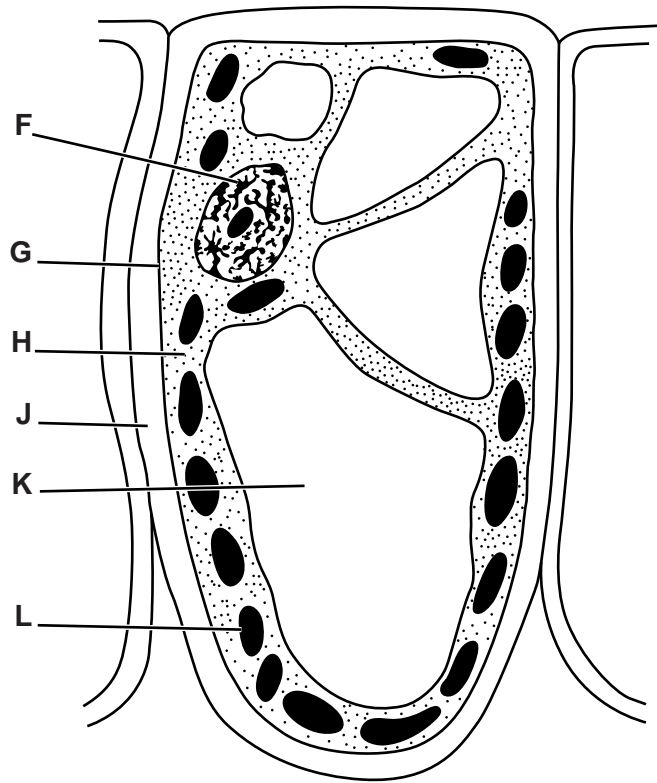


Fig. 1.2

Use the letters from Fig. 1.2 to complete Table 1.1.

Write **one** letter only in each box to identify the function. You may use each letter once, more than once or not at all.

Table 1.1

function	letter from Fig. 1.2
controls movement of substances into and out of the cell	
exerts a pressure to help maintain the shape of the cell	
produces sugars using light as a source of energy	
withstands the internal pressure of the cell	
controls all the activities of the cell	

[5]

(c) The enzyme catalase is found in lettuce leaves.

A student investigated the activity of this enzyme by grinding some lettuce leaves and adding them to a solution of hydrogen peroxide. The volume of oxygen produced was measured until the reaction stopped.

The student's results are shown in Fig. 1.3.

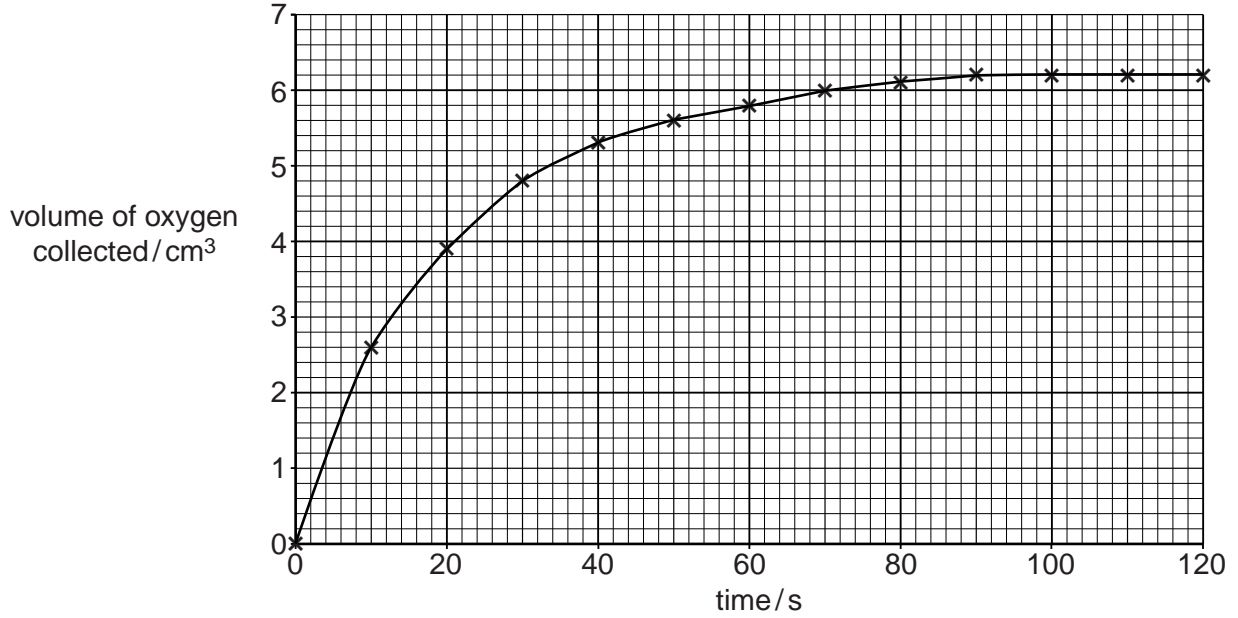


Fig. 1.3

(i) Describe the results shown in Fig.1.3. You will gain credit if you use the data in your answer.

.....

.....

.....

.....

.....

.....

.....

.....

.....

.....

.....[3]

(ii) Explain the action of enzymes during a reaction.

.....
.....
.....
.....
.....
.....
.....
..... [3]

[Total: 16]

2 (a) Define the term *excretion*.

.....

.....

.....

.....

.....

.....

.....

.....[3]

Fig. 2.1 is a diagram of a kidney tubule and its blood supply.

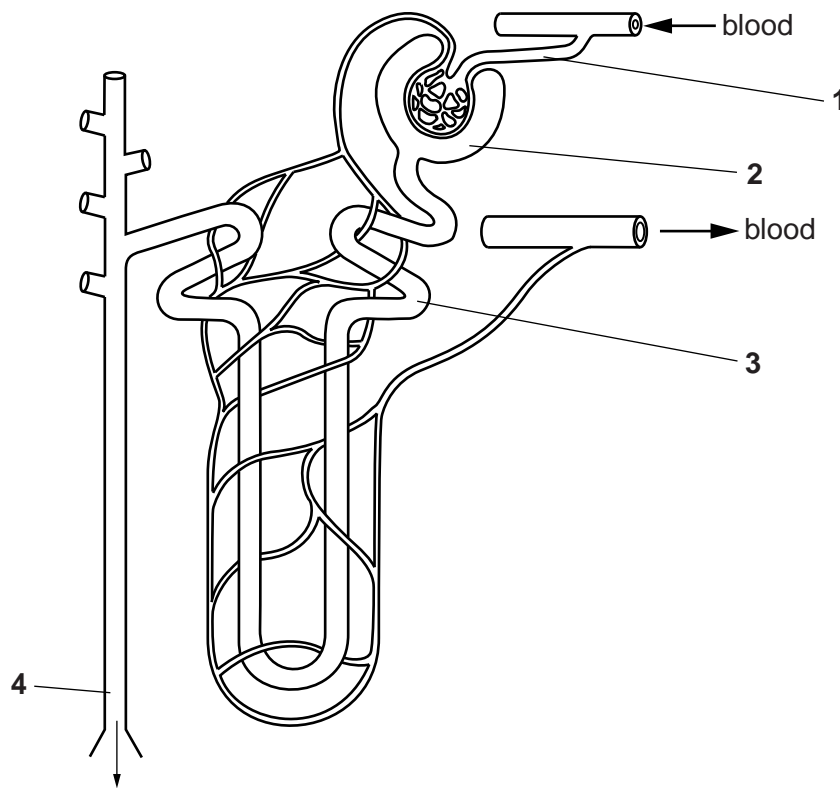


Fig. 2.1

(b) The concentrations of solutes in the fluids at regions 1, 2, 3 and 4 were determined. The results are shown in Table 2.1.

Table 2.1

substance	concentration / g dm ⁻³			
	region 1	region 2	region 3	region 4
glucose	0.9	0.9	0.2	0.0
protein	82.0	0.0	0.0	0.0
salts	8.0	8.0	9.6	16.5
urea	0.2	0.2	0.2	20.0

State the substance or substances in Table 2.1 which:

(i) has molecules which are too large to be filtered;
[1]

(ii) has molecules which are small enough to be filtered but is completely reabsorbed from the fluid in the kidney tubule;
[1]

(iii) increases in concentration as fluid moves along the kidney tubule.
 1
 2[1]

(c) State **three** structures through which the fluid from region 4 passes as it leaves the body.
 1
 2
 3[3]

(d) One role of the kidney is to maintain the concentration of the blood plasma.
 Name the process of maintaining constant conditions within the body.
[1]

[Total: 10]

- 3 Sewage treatment works use bacteria to digest the waste matter. Waste matter contains complex organic compounds, such as starch, cellulose, protein and fat.

Fig. 3.1 shows a diagram of a sewage works with an aerobic digestion tank.

The sewage works discharges clean water into a river. Downstream from the sewage works, water is removed to be used as drinking water for a nearby village.

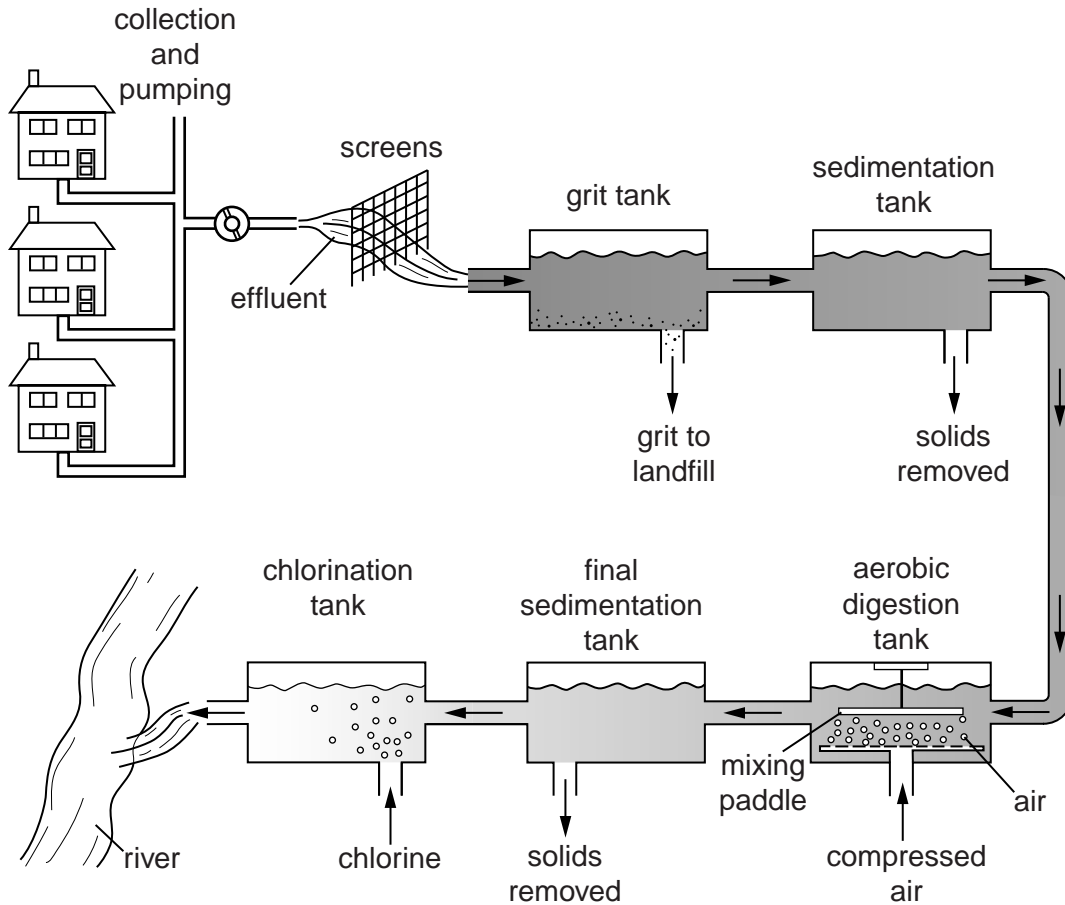


Fig. 3.1

4 Mammals have a double circulatory system. Blood flows between:

- the heart and the lungs
- the heart and the rest of the body (systemic circulation).

(a) Fig. 4.1 shows a cross-section of an artery.

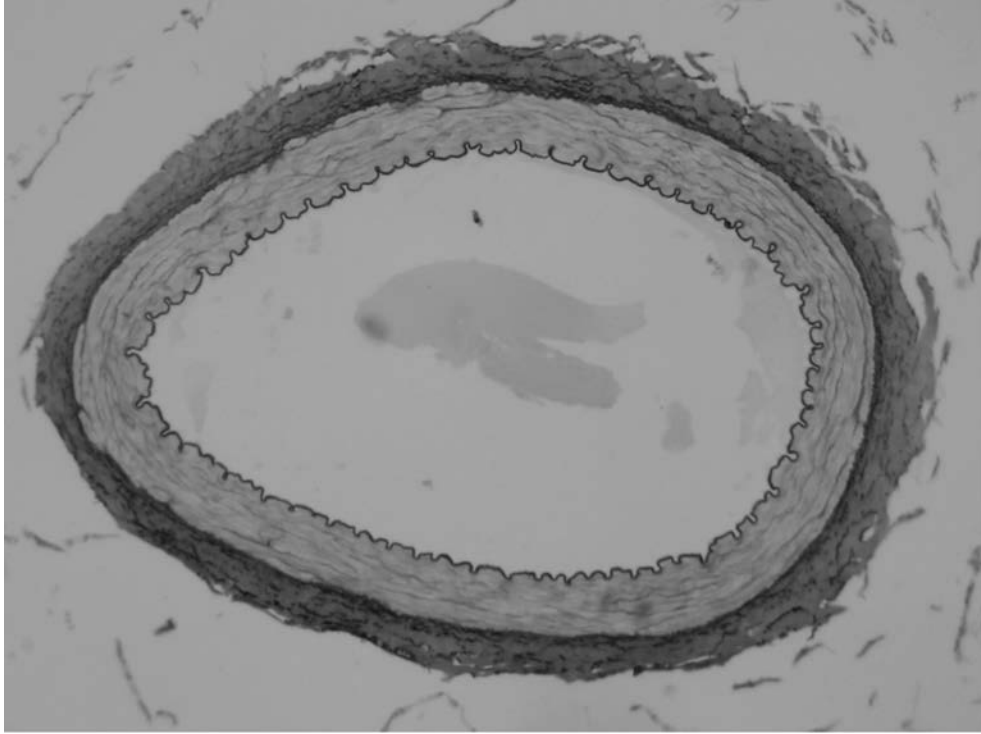


Fig. 4.1

Explain how the structure of an artery, as shown in Fig. 4.1, is related to its functions.

.....

.....

.....

.....

.....

.....

.....

.....

.....

.....

.....

.....

[4]

Question 4 continues on page 12.

(b) Fig. 4.2 shows the total cross-sectional area of the blood vessels in the systemic circulation. It also shows the changes that occur in blood pressure and the speed (velocity) of blood in the different blood vessels.

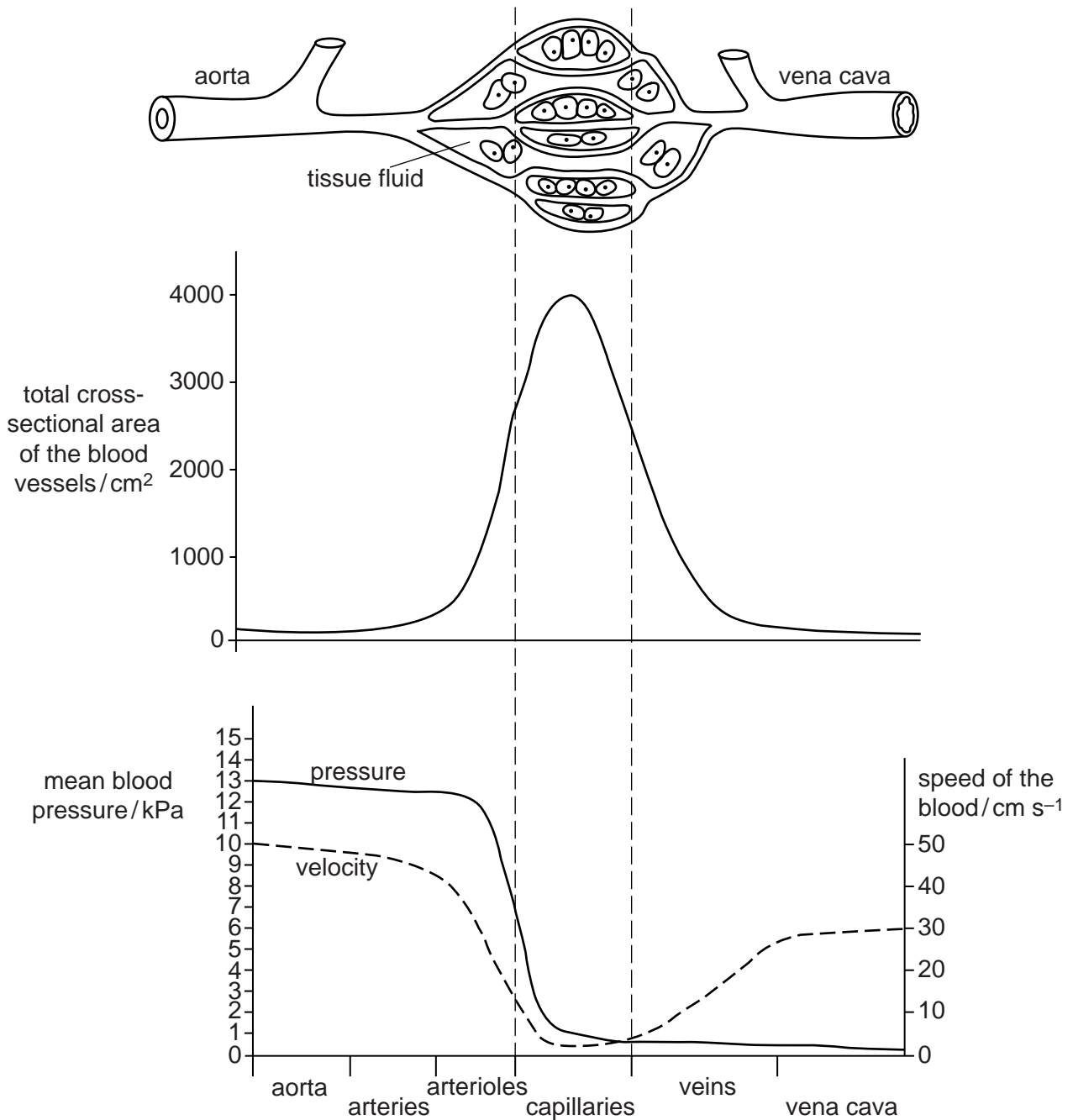


Fig. 4.2

(i) State the maximum mean blood pressure in the aorta.

.....[1]

(ii) Describe how mean blood pressure and speed of blood change with cross-sectional area of blood vessels, as shown in Fig. 4.2.

blood pressure

.....

.....

.....

speed of blood

.....

.....

.....[3]

(c) Describe how substances move from the blood in the capillaries into the tissue fluid.

.....

.....

.....

.....

.....

.....[3]

(d) Blood flows from arteries into arterioles before entering capillaries.

Explain the role of the arterioles in the skin when a person is very cold.

.....

.....

.....

.....

.....

.....[3]

[Total: 14]

5 Fig. 5.1 is a diagram of the human immunodeficiency virus (HIV).

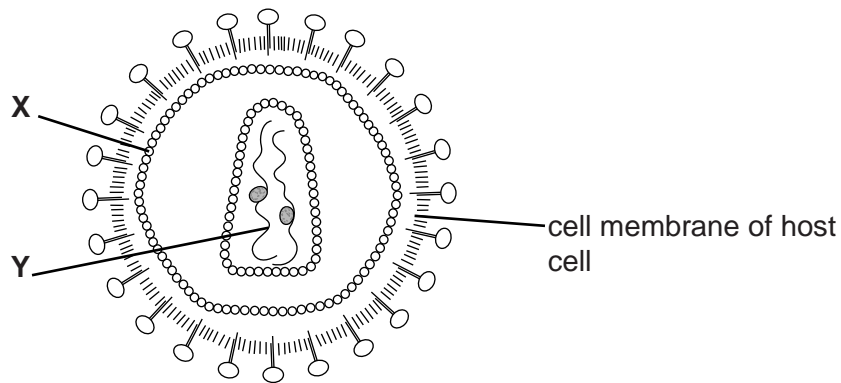


Fig. 5.1

(a) (i) Name the parts of the virus labelled X and Y.

X

Y [2]

(ii) State three ways in which the **structure** of bacteria differs from the structure of viruses.

1

2

3 [3]

Question 5 continues on page 16.

- (b) Sub-Saharan Africa has the highest proportion of the population living with HIV in the world. The World Health Organization estimates both the total number of people who live with HIV and the total number of people that are newly infected each year.

Fig. 5.2 shows the estimated numbers for sub-Saharan Africa between 1990 and 2010.

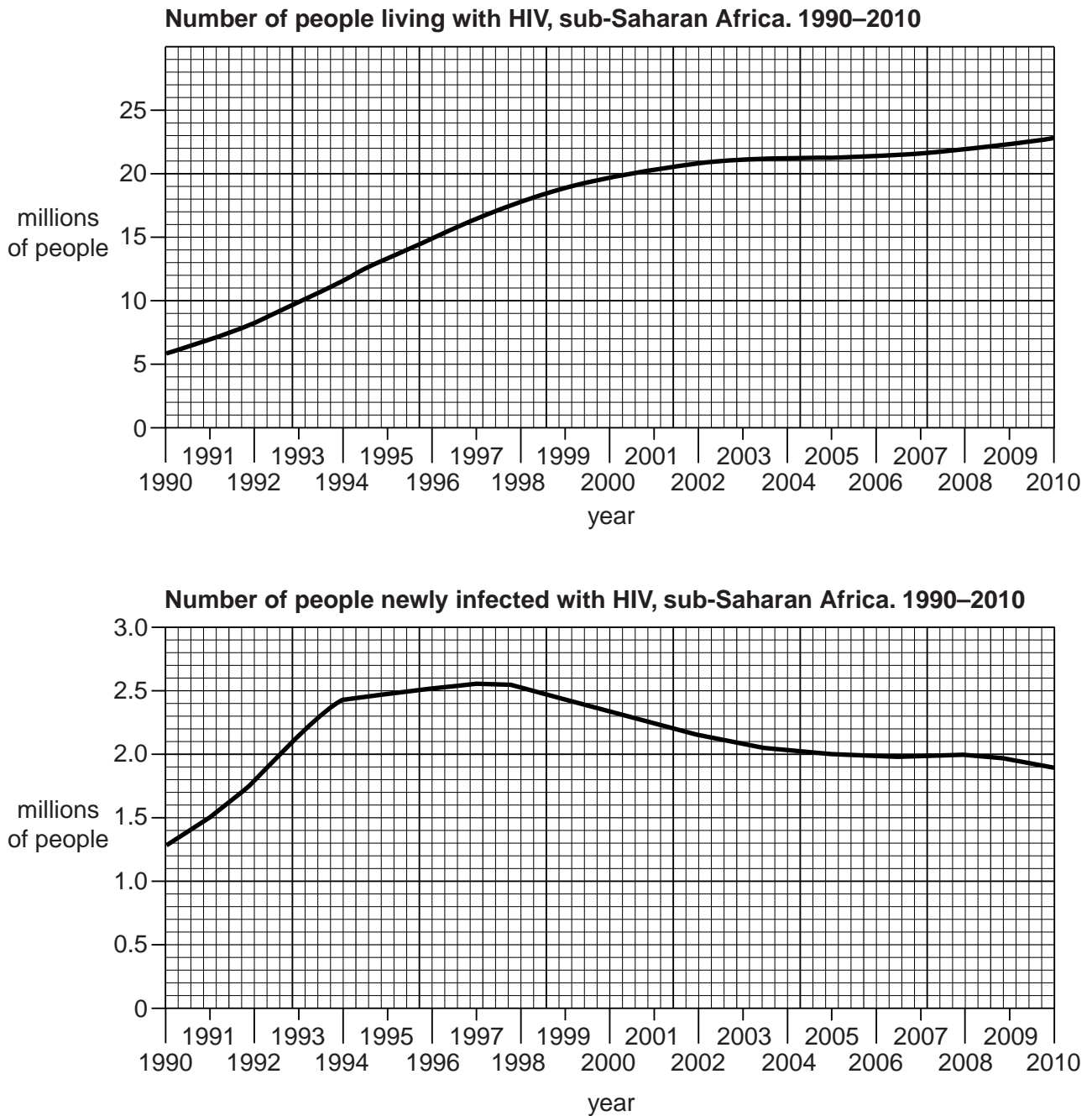


Fig. 5.2

- (i) Summarise the changes between 1990 and 2009 in the number of people living with HIV and the number of people newly infected with HIV.

number of people living with HIV

.....
.....
.....

number of people newly infected with HIV

.....
.....
..... [4]

- (ii) Suggest why in 2010 the number of people living with HIV increased but the number of newly infected people decreased.

.....
.....
.....
.....
.....
..... [2]

- (iii) Describe **three** ways in which HIV is transmitted from infected to uninfected people.

1

.....

2

.....

3

..... [3]

(iv) Describe the effects of HIV on the immune system.

.....
.....
.....
.....
.....
.....
.....
.....[3]

[Total: 17]

Question 6 begins on page 20.

- 6 Some pollutants are not broken down easily and remain in the environment for a long time. These are described as persistent pollutants.

PCBs are a waste material from the manufacturing of electrical insulation. PCBs are one of the most persistent pollutants in the environment.

Between 1947 and 1976, factories dumped large quantities of PCBs into the Hudson River in the USA. Studies measured the concentrations of PCBs in the tissues of organisms in a food chain in the sea near the Hudson River, as shown in Fig. 6.1.

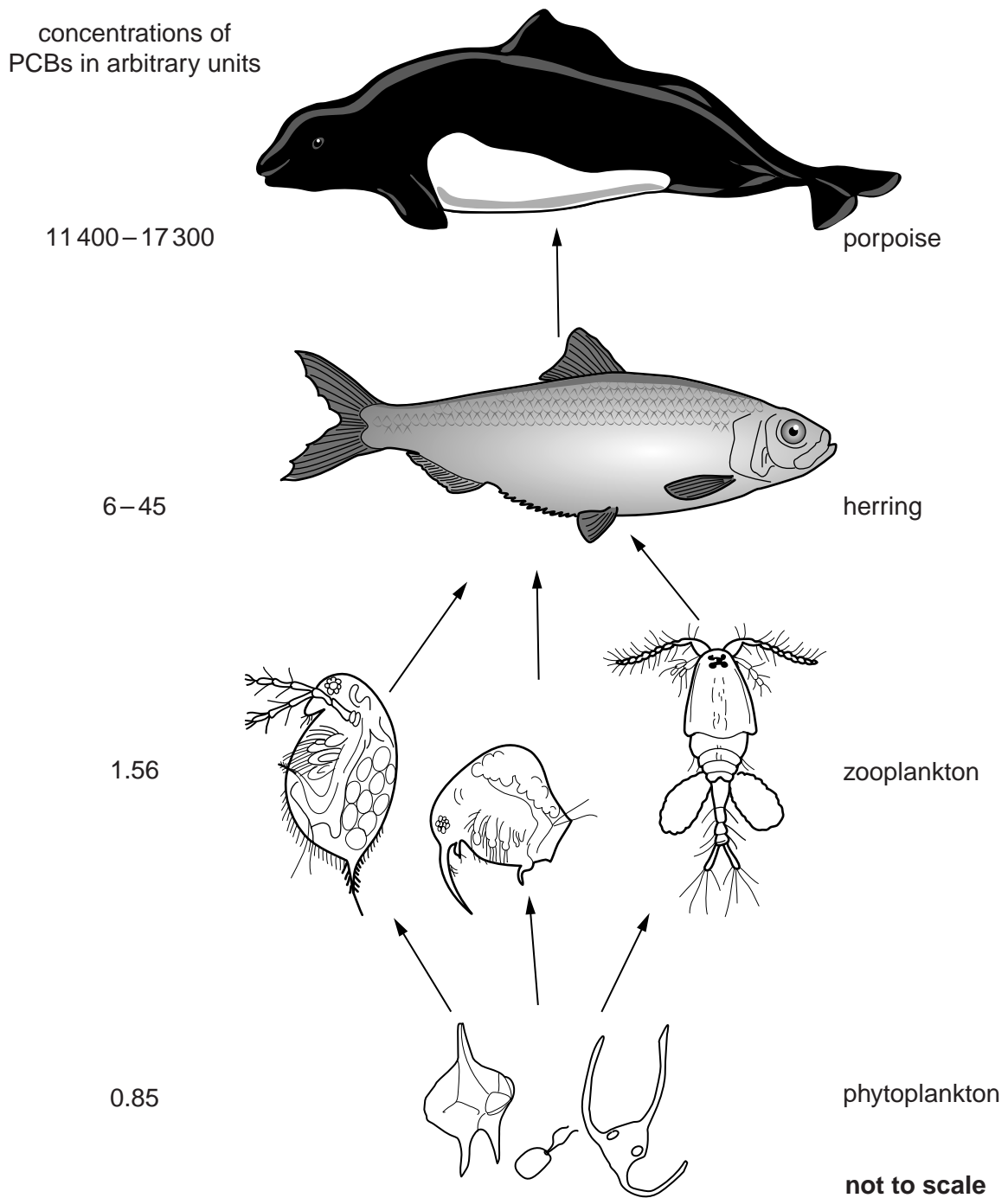


Fig. 6.1

(a) (i) Describe the results shown in Fig. 6.1.

.....
.....
.....
.....
.....
.....
.....
.....[3]

(ii) Suggest an explanation for the different concentrations of PCBs in the organisms of the food chain.

.....
.....
.....
.....
.....
.....
.....
.....
.....[3]

(c) Describe the problems caused by non-biodegradable plastics in the environment.

.....

.....

.....

.....

.....

.....

.....

.....[3]

[Total: 16]

BLANK PAGE

Copyright Acknowledgements:

Figure 1.1 © Ref: C003/5023; *Tea leaf, light micrograph*; www.sciencephoto.com.

Figure 5.2 © *GLOBAL HIV/AIDS RESPONSE – Epidemic update and health sector progress towards Universal Access – Progress Report*; 2011; http://whqlibdoc.who.int/publications/2011/9789241502986_eng.pdf.

Permission to reproduce items where third-party owned material protected by copyright is included has been sought and cleared where possible. Every reasonable effort has been made by the publisher (UCLES) to trace copyright holders, but if any items requiring clearance have unwittingly been included, the publisher will be pleased to make amends at the earliest possible opportunity.

Cambridge International Examinations is part of the Cambridge Assessment Group. Cambridge Assessment is the brand name of University of Cambridge Local Examinations Syndicate (UCLES), which is itself a department of the University of Cambridge.